

<b>NOMACHINE</b>		Step by Step for Linux How to run a remote desktop on TestDrive server	
Prepared by: Bartolo Qualano		N°: D-309/15-NXH-DOC	
Approved by: Silvia Regis	Signature:	Date: 30/05/2005	Amended: B

## Step by Step for Linux

# How to run a remote desktop on TestDrive server

<b>NOMACHINE</b>		Step by Step for Linux How to run a remote desktop on TestDrive server	
Prepared by: Bartolo Qualano		N°: D-309/15-NXH-DOC	
Approved by: Silvia Regis	Signature:	Date: 30/05/2005	Amended: B

## Index

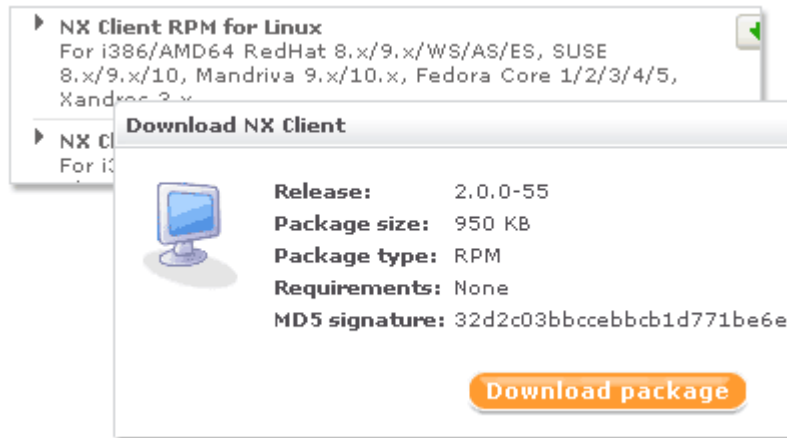
1. How to run a remote desktop on TestDrive server.....	3
1.1 Download.....	3
1.2 Install.....	3
1.3 Register.....	3
1.4 Configure.....	4
1.5 Login.....	5
1.6 Running.....	6

<b>NOMACHINE</b>		Step by Step for Linux How to run a remote desktop on TestDrive server	
Prepared by: Bartolo Qualano		N°: D-309/15-NXH-DOC	
Approved by: Silvia Regis	Signature:	Date: 30/05/2005	Amended: B

## 1. How to run a remote desktop on TestDrive server

### 1.1 Download

Select the NX Client version for your Operating System and [download](#) it.



### 1.2 Install

Open a terminal window and check you have root privileges. Install NX Client by executing the following command:

```
rpm -Uvh nxclient-x.y.z-d.i386.rpm
```

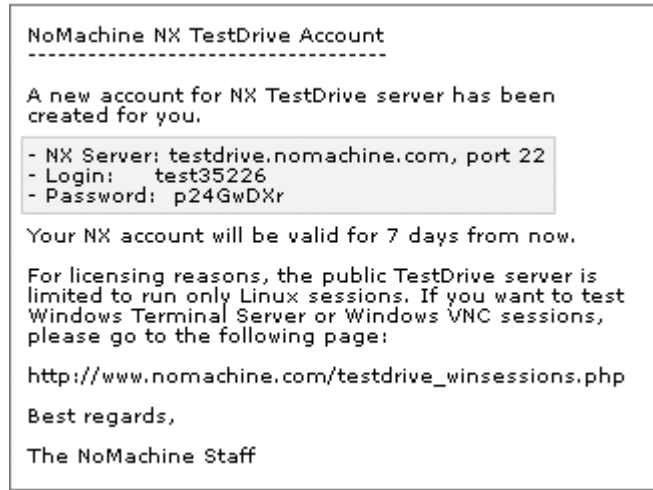
### 1.3 Register

Go to the [TestDrive](#) page, insert your name and e-mail address and get an account.

Your full name:  E-mail address:

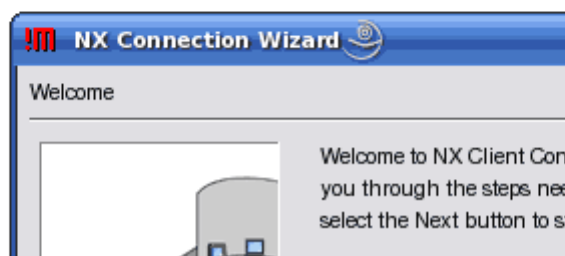
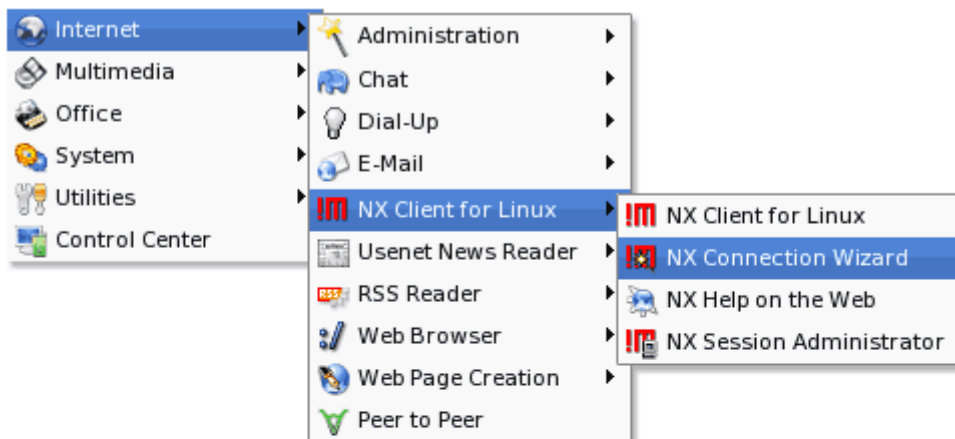
<b>NOMACHINE</b>		Step by Step for Linux How to run a remote desktop on TestDrive server	
Prepared by: Bartolo Qualano		N°: D-309/15-NXH-DOC	
Approved by: Silvia Regis	Signature:	Date: 30/05/2005	Amended: B

You will receive an e-mail containing your login and password.



## 1.4 Configure

Run NX Connection Wizard.



<b>NOMACHINE</b>		Step by Step for Linux How to run a remote desktop on TestDrive server	
Prepared by: Bartolo Qualano		N°: D-309/15-NXH-DOC	
Approved by: Silvia Regis	Signature:	Date: 30/05/2005	Amended: B

Insert the name of the session, for example "KDE on TestDrive", host and port.

Insert name of the session. Your configuration settings will be saved with this name.

Session

Insert server's name and port where you want to connect.

Host  Port

Select type of your internet connection.

MODEM  
 ISDN  
 ADSL  
 WAN  
 LAN

Select the speed of your Internet connection. ADSL should be OK in most cases, but you can select MODEM or ISDN if you have a slow link. Now click "Next" on all the remaining pages of the wizard.

### 1.5 Login

If everything went OK you should see the login dialog of NX Client.

NOMACHINE

Login

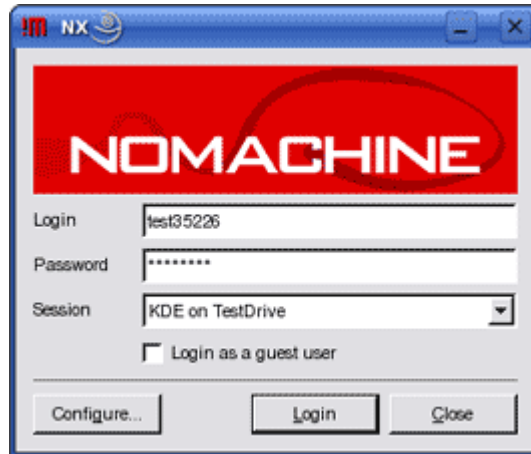
Password

Session

Login as a guest user

<b>NOMACHINE</b>		Step by Step for Linux How to run a remote desktop on TestDrive server	
Prepared by: Bartolo Qualano		N°: D-309/15-NXH-DOC	
Approved by: Silvia Regis	Signature:	Date: 30/05/2005	Amended: B

Insert the login and password you received by e-mail and click on the "Login" button.



## 1.6 Running

You are now running a Linux session on NoMachine's TestDrive server. You can browse the Internet, write a document using OpenOffice or try a few screensavers, just to see how fast your NX session is running.



<b>NOMACHINE</b>		Step by Step for Linux How to run a remote desktop on TestDrive server	
Prepared by: Bartolo Qualano		N°: D-309/15-NXH-DOC	
Approved by: Silvia Regis	Signature:	Date: 30/05/2005	Amended: B

You can switch between full-screen and your original desktop by clicking on the 'Magic Pixel' on the top-right corner of your screen.

If for any reason your remote session is not responding you can switch by pressing the sequence *ctrl+alt+shift+esc*.