

NOMACHINE		Step by Step for Windows How to run a remote desktop on TestDrive server	
Prepared by: Bartolo Qualano		N°: D-309/17-NXH-DOC	
Approved by: Silvia Regis	Signature:	Date: 30/05/2006	Amended: B

Step by Step for Windows

How to run a remote desktop on TestDrive server

NOMACHINE		Step by Step for Windows How to run a remote desktop on TestDrive server	
Prepared by: Bartolo Qualano		N°: D-309/17-NXH-DOC	
Approved by: Silvia Regis	Signature:	Date: 30/05/2006	Amended: B

Index

1. How to run a remote desktop on TestDrive server.....	3
1.1 Download.....	3
1.2 Install.....	3
1.3 Register.....	3
1.4 Configure.....	4
1.5 Login.....	5
1.6 Running.....	6

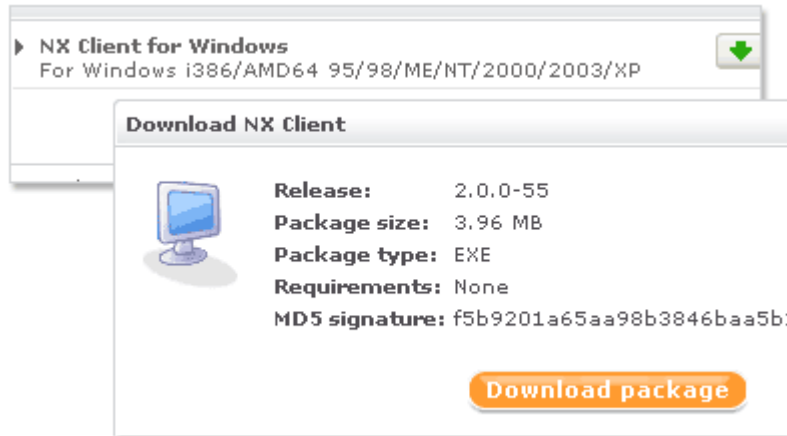
NOMACHINE		Step by Step for Windows How to run a remote desktop on TestDrive server	
Prepared by: Bartolo Qualano		N°: D-309/17-NXH-DOC	
Approved by: Silvia Regis	Signature:	Date: 30/05/2006	Amended: B

1. How to run a remote desktop on TestDrive server

Running your first Linux session on TestDrive from your NX Client for Windows is fast and easy. Just follow the instructions below.

1.1 Download

Select the NX Client version for your Operating System and [download](#) it.



1.2 Install

Launch "nxclient-x.y.z-d.exe" to install NX Client on your machine.

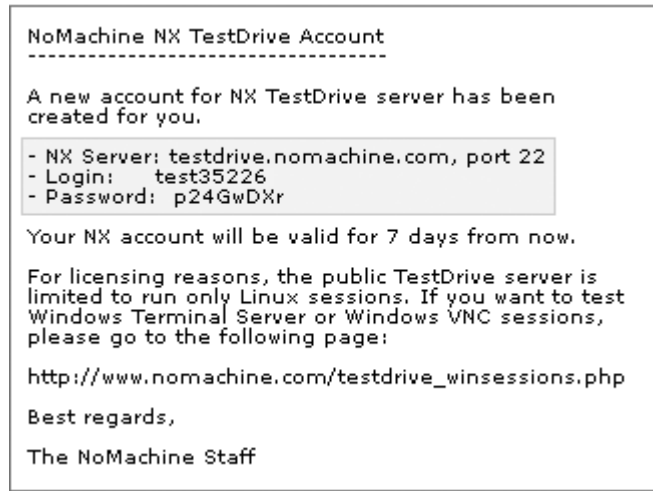
1.3 Register

Go to the [TestDrive page](#), insert your name and e-mail address and get an account.

Your full name:	E-mail address:
<input type="text"/>	<input type="text"/>
<input type="button" value="Send"/>	

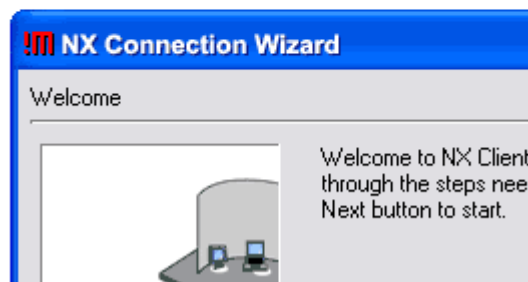
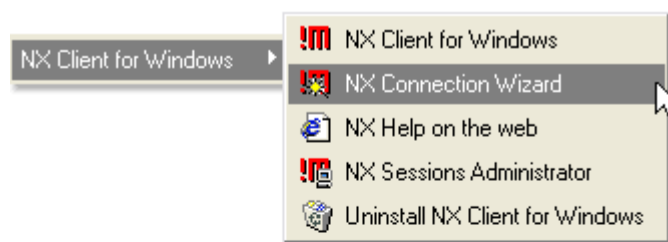
NOMACHINE		Step by Step for Windows How to run a remote desktop on TestDrive server	
Prepared by: Bartolo Qualano		N°: D-309/17-NXH-DOC	
Approved by: Silvia Regis	Signature:	Date: 30/05/2006	Amended: B

You will receive an e-mail containing your login and password.



1.4 Configure

Run NX Connection Wizard.



Insert the name of session, for example "KDE on TestDrive", host and port.

NOMACHINE		Step by Step for Windows How to run a remote desktop on TestDrive server	
Prepared by: Bartolo Qualano		N°: D-309/17-NXH-DOC	
Approved by: Silvia Regis	Signature:	Date: 30/05/2006	Amended: B

Insert name of the session. Your configuration settings will be saved with this name.

Session

Insert server's name and port where you want to connect.

Host Port

Select type of your internet connection.

MODEM
 ISDN
 ADSL
 WAN
 LAN

Select the speed of your Internet connection. ADSL should be OK in most cases, but you can select MODEM or ISDN if you have a slow link. Now click "Next" on all the remaining pages of the wizard.

1.5 Login

If everything went OK, you should see login dialog of NX Client.

NOMACHINE

Login

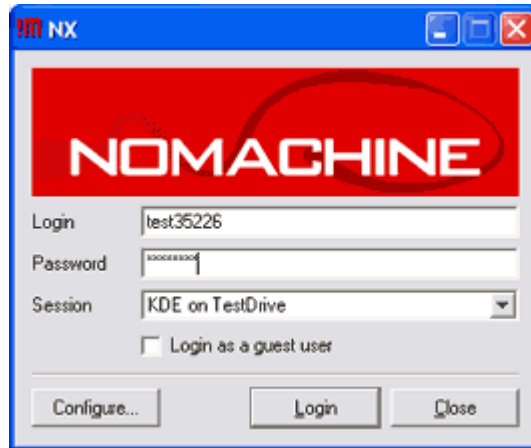
Password

Session

Login as a guest user

NOMACHINE		Step by Step for Windows How to run a remote desktop on TestDrive server	
Prepared by: Bartolo Qualano		N°: D-309/17-NXH-DOC	
Approved by: Silvia Regis	Signature:	Date: 30/05/2006	Amended: B

Insert the Login and Password you received in the email and click on "Login" button.



1.6 Running

You are now running a Linux session on NoMachine's TestDrive server. You can browse the Internet, write a document using OpenOffice or try a few screensavers, just to see how fast your NX session is running.



NOMACHINE		Step by Step for Windows How to run a remote desktop on TestDrive server	
Prepared by: Bartolo Qualano		N°: D-309/17-NXH-DOC	
Approved by: Silvia Regis	Signature:	Date: 30/05/2006	Amended: B

You can switch between full-screen and your original desktop by clicking on the 'Magic Pixel' on the top-right corner of your screen.

If, for any reason, your remote session is not responding, you can switch by pressing the sequence ctrl+alt+shift+esc.